

MISSION CRITICAL AND DIGITAL INFRASTRUCTURE SERVICES

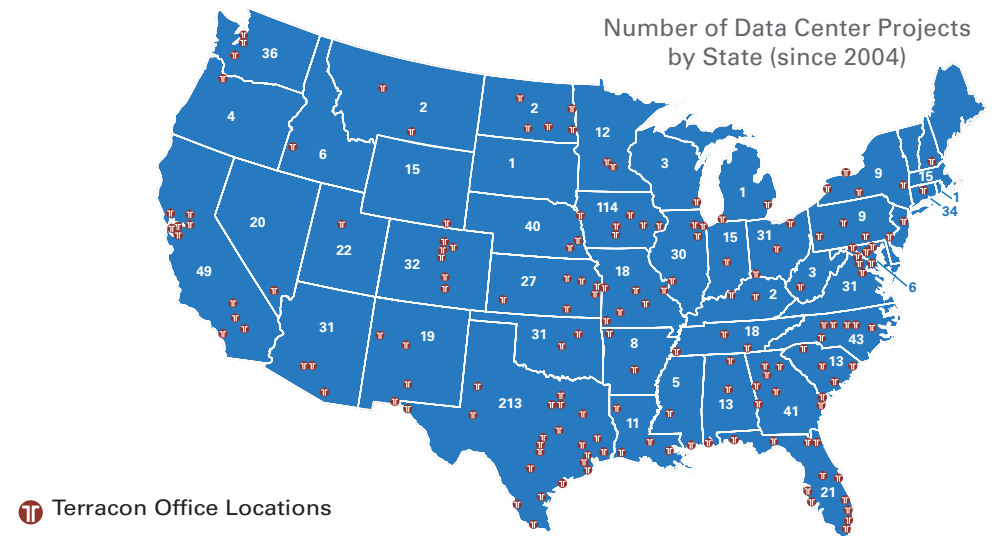
SELECT SITE **DESIGN/MITIGATE** **CONSTRUCT** **MANAGE ASSETS**



Every aspect of our 21st century society is data driven and as the demand continues to grow, there is no time for delays. Recognizing your data center project and its supporting infrastructure is mission critical, time is of the essence. With **more than 150 offices** and more than 5,000 employees, Terracon's nationwide resources mean we can quickly deliver services to meet your project needs, regardless of schedule. By combining our national resources with specific local area expertise, **Terracon provides high-quality deliverables and practical solutions while saving you time and money.**

Terracon has been providing professional services for data centers since 2004, offering environmental, facilities, geotechnical, and materials testing services. Our clients include internet and telecommunication companies, software companies, architecture and engineering design firms, real estate developers, general contractors, financial services firms, construction management firms and utility companies. We partner with site selection, design, and construction teams to deliver tailored services that meet our clients' objectives.

With **more than 1,000 data center projects** in our portfolio, our extensive experience provides our technology clients results they can trust. Utilizing proprietary software, combined with our seamless service delivery, Terracon communicates key information in real-time, minimizing



Terracon Office Locations

risk and keeping your project on schedule. **Terracon can support the full lifecycle of your project development**, with specific services including:

- Site Selection/Due Diligence
 - Stage1 Geotechnical Expected Subsurface Conditions Delivered via GeoReport®
 - Stage1 Environmental Site Considerations
 - Phase 1 Environmental Site Assessments
 - Natural and Cultural Resources
 - Wetlands and Waters of the U.S. Delineation
- Geotechnical Design Services
 - Project Planning
 - Field Exploration
 - Site Characterization
 - Laboratory Testing
 - Thermal Resistivity
 - Geotechnical Engineering
- Geotechnical Construction Support
- New Facilities Development
- Materials Services
 - Construction Quality Assurance/Quality Control
 - Construction Special Inspection, Observation, and Monitoring
 - Materials Engineering
 - Field and Laboratory Testing and Analysis

WHY TERRACON?

Resourceful. We apply customized approaches to meet the demands of mission critical projects. Our innovative tools, backed by nationwide resources, enable us to keep pace with the ever-evolving technology industry.

Responsive. Through our national account program, a dedicated client team will develop and offer in-depth knowledge of your project management goals and expectations. This means we can mobilize quickly, staffing your projects with team members who will work safely and efficiently.

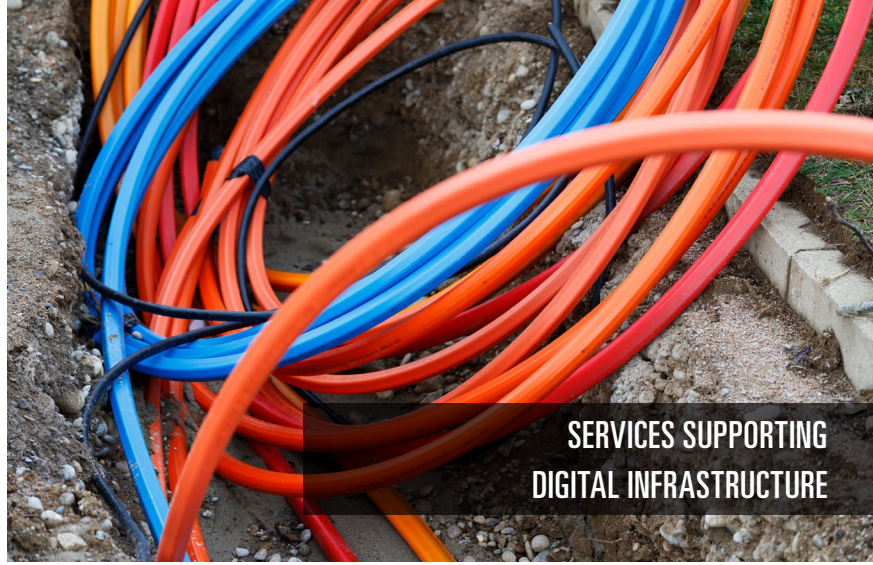
Reliable. We will be here whenever you need us. With more than 50 years in business, we simplify complex issues and provide fiscally-sound solutions, regardless of the project's size or scope.

INNOVATIVE RESULTS. PROVEN DELIVERY.

► *Real Time Solutions for Digital Infrastructure and Mission Critical Projects.*



RESPONSIVENESS TO
MISSION CRITICAL DEMANDS

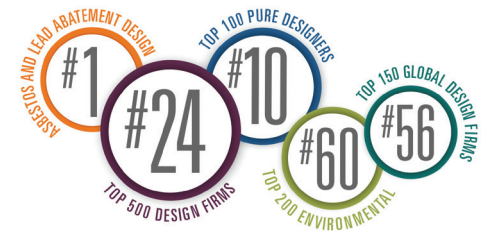


SERVICES SUPPORTING
DIGITAL INFRASTRUCTURE

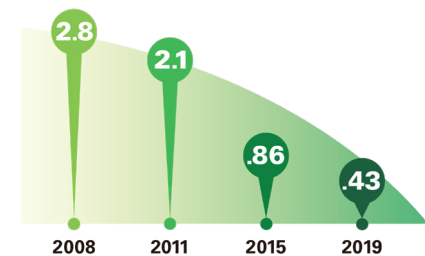


SERVICES
available in all
50 states
Offices Nationwide

ENR Rankings / 2019



TRIR



CONTACT

Jared Mechetti, P.E.
Market Sector Lead
Mission Critical & Digital Infrastructure
D (916) 246 5099 | M (919) 413 3939
Jared.Mechetti@terracon.com

Environmental



Facilities



Geotechnical



Materials